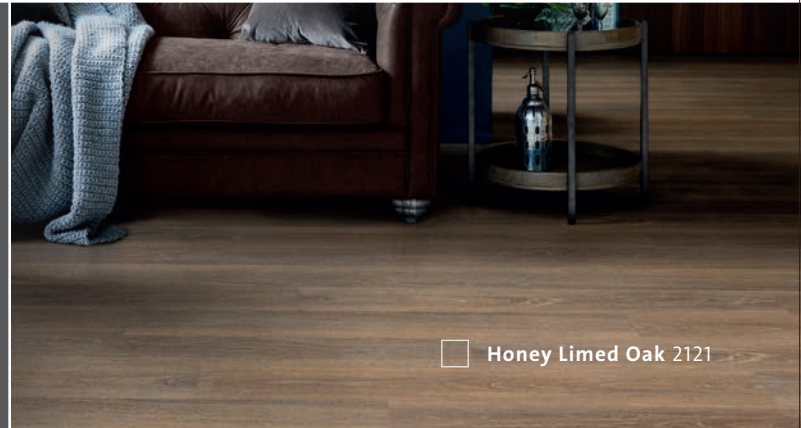


# Expona Superplank

## PRODUCT SPECIFICATION

### KEY FEATURES

- Rustic wood & contemporary timber designs.
- Single wide plank format.
- 2mm gauge for seamless finish.
- Low cost, polish-free maintenance.
- Heavy commercial interiors & residential.



□ Honey Limed Oak 2121

| PRODUCT FORMAT | Standard           | Result               |
|----------------|--------------------|----------------------|
| Gauge          | ISO 24346 (EN 428) | 2.0mm                |
| Wear Layer     | ISO 24340 (EN 429) | 0.55mm               |
| Total Weight   | ISO 23997 (EN 430) | 2964g/m <sup>2</sup> |
| Finish         |                    | PUR                  |

| PLANK SIZES | Size               | Shades | Quantity per Box | Coverage per Box/Roll |
|-------------|--------------------|--------|------------------|-----------------------|
| Plank       | 152.4mm x 1219.2mm | 3      | 18               | 3.34m <sup>2</sup>    |
|             | 184.2mm x 1219.2mm | 8      | 15               | 3.37m <sup>2</sup>    |
|             | 203.2mm x 1219.2mm | 2      | 14               | 3.46m <sup>2</sup>    |
|             | 304.8mm x 609.6mm  | 4      | 18               | 3.34m <sup>2</sup>    |

| PERFORMANCE REQUIREMENTS     | Standard   | Result   |
|------------------------------|--|--|
| General Performance          | ISO 10582 (EN 649)   | Conforms   |
| Use Area                     | ISO 10874 (EN 685)   | 23, 33, 42   |
| Slip Resistance              | EN 13893<br>DIN 51130 / DIN EN 16165 Ann. B<br>AS 4586<br>ASTM D2047 | Class DS<br>R10<br>R10<br>SCOF ≥0.5                          |
| Binder Content               | ISO 10582  | Type I   |
| Abrasion Resistance          | EN 649   | Group T  |
| Reaction to Fire             | EN 13501-1<br>ASTM E662<br>ASTM E648<br>AS ISO 9239.1                | Class Bfl-S1<br><450 Pass<br>Class 1<br>≥ 8kW/m <sup>2</sup> |
| Static Electrical Propensity | EN 1815  | ≤2.0kV Classified as 'antistatic'                            |

|                               |  |   |
|-------------------------------|--|---|
| Residual Indentation          | ISO 24343-1<br>ASTM F970<br>ASTM F1914 | <0.05mm*<br>≤0.005" @ 750psi<br>≤0.005" |
| Castor Chair (continuous use) | ISO 4918 (EN 425)                      | Suitable                                |
| Dimensional Stability         | ISO 23999 (EN 434)<br>ASTM F2199       | ≤0.10%<br>Pass                          |
| Underfloor Heating            |  | Suitable, max 27°C                      |
| Light Fastness                | ISO 105-B02 (Method 3)                 | ≥6                                      |
| Resistance to Light           | ASTM F1515                             | ΔE ≤ 8.0 - Meets                        |
| Resistance to Heat            | ASTM F1514                             | ΔE ≤ 8.0 - Meets                        |

\*Average test value from current production.

| SUSTAINABILITY            | Standard            | Result                        |
|---------------------------|---------------------|-------------------------------|
| BRE Green Guide           |                     | A+ ENP 429                    |
| GreenTag                  |                     | GreenRate Level A             |
| Generic EN 15804 EPD      |                     | Available                     |
| Recyclable                |                     | 100%                          |
| Recycled Content          |                     | Up to 40%                     |
| REACH                     |                     | Compliant                     |
| Indoor Air Comfort Gold   |                     | Eurofins certified product    |
| FloorScore                |                     | Certified                     |
| Finnish M1 Classification |                     | Certified                     |
| AgBB/ABG                  |                     | Pass                          |
| Responsible Sourcing      | BES 6001<br>SA 8000 | Very good<br>Approved factory |

| ACOUSTIC PERFORMANCE           | Standard     | Result |
|--------------------------------|--------------|--------|
| Impact Sound Reduction         | ISO 10140-3  | 2dB    |
| Sound Transmission Coefficient | ASTM E90/492 | STC 55 |
| Impact Insulation Class        | ASTM E90/492 | IIC 39 |

| MAINTENANCE PERFORMANCE | Standard                        | Result                             |
|-------------------------|---------------------------------|------------------------------------|
| Resistance to Chemicals | ISO 26987 (EN 423)<br>ASTM F925 | Good resistance<br>Good resistance |

Regular light maintenance is more cost-effective than periodic heavy maintenance and more beneficial to the floor covering.



# Expona Superplank Shades

RANGE SHADES

17 Shades

## WOOD COLLECTION

Plank Size : 152.4 x 1219.2mm



**2111 BLEACHED OAK**



**2114 WASHED ELM**

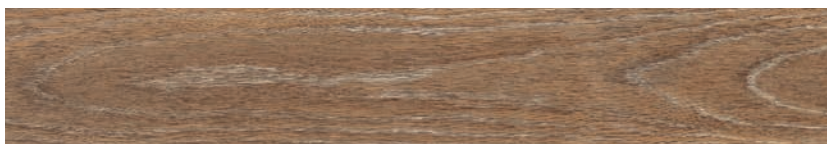


**2117 GREY ELM**

Plank Size : 203.2 x 1219.2mm



**2113 GHOST GUM**



**2121 HONEY LIMED OAK**

WOOD COLLECTION

Plank Size : 184.2 x 1219.2mm



2166 NORDIC WHITE OAK



2112 VANILLA OAK



2109 BLOND OAK



2119 PLIED BIRCH



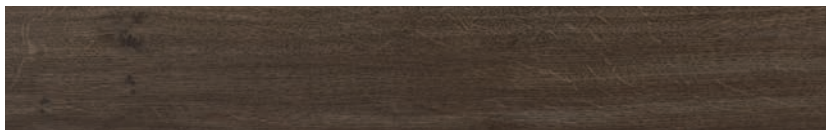
2118 GOLDEN OAK



2120 AMBER WOOD



2115 HERITAGE BARK



2110 BLACK JAPAN

 This design intentionally features a strong pattern and/or colour variation to accurately replicate natural timber

 All designs achieve R10, which is an ex-factory measure of slip resistance

ABSTRACT COLLECTION

Plank Size : 304.8 x 609.6mm



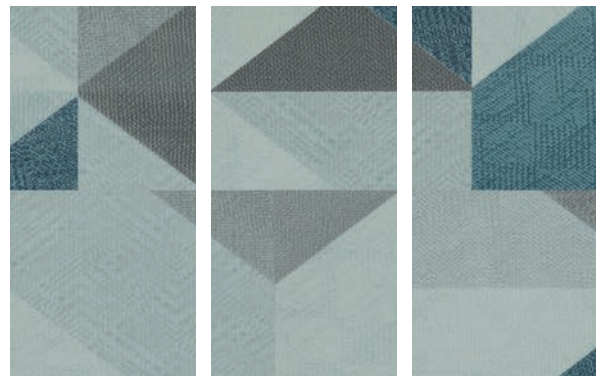
2122 HARVEST



2123 GRANITE




2124 GILDED



2125 ZEPHYR



 This design intentionally features a strong pattern and/or colour variation to accurately replicate natural timber

 All designs achieve R10, which is an ex-factory measure of slip resistance