



Accredited for compliance with ISO/IEC 17025 – Testing  
 NATA is a signatory to the ILAC Mutual Recognition Arrangement for the mutual recognition of the equivalence of testing, medical testing, calibration and inspection reports  
 Accreditation No. 2735

## OIL-WET INCLINING PLATFORM SLIP RESISTANCE TEST

**Polysafe Verona PUR Pure Colours, Thickness: 2.0mm, Weight: 2.6kg/m<sup>2</sup>, Shade: 5236 Rich Black, Batch No: 1H364**

**Prepared for:** Polyflor Limited  
 Graham King  
 PO Box 3, Radcliffe New Road, Whitefield  
 MANCHESTER M45 7NR ENGLAND

**Specimen Description:** Polysafe Verona PUR Pure Colours, Thickness: 2.0mm, Weight: 2.6kg/m<sup>2</sup>, Shade: 5236 Rich Black, Batch No: 1H364, 505x1015 mm.

**No. of Specimens:** 1 off

**Surface Structure:** Structured

**Specimen Preparation:** Washed with water and pH neutral detergent, rinsed then dried.

**Specimen Configuration:** Unfixed

**Test Direction:** Test direction not applicable.

**Joint Type & Width:** N/A

**Air Temperature:** 22°C

**Test Standard:** AS 4586:2013 Slip resistance classification of new pedestrian surface materials, Appendix D - Oil Wet Inclining Platform Test

**Test Shoe:** Leipzig V73-SP

**Test Location:** ATTAR 44-48 Rocco Drive, Scoresby, VIC, 3179

**Test Date:** 16 November 2021

**Test Personnel:** Awel Guled and Marcus Braché

<b>Displacement Space</b> (rounded to the nearest 0.5cm <sup>3</sup> /dm <sup>2</sup> ):	Not tested
<b>Displacement Space Assessment Group</b> (Appendix E, AS 4586 - 2013):	Not tested
<b>Corrected mean overall acceptance angle (<math>\alpha_{ave}</math>)</b> (rounded down to the nearest degree):	<b>19°</b>
<b>Classification:</b>	<b>R11</b>

These results apply only to the specimens tested and it is recommended that before selection of flooring or paving materials the effect of service conditions, including maintenance procedures and wear on their slip resistance be checked.

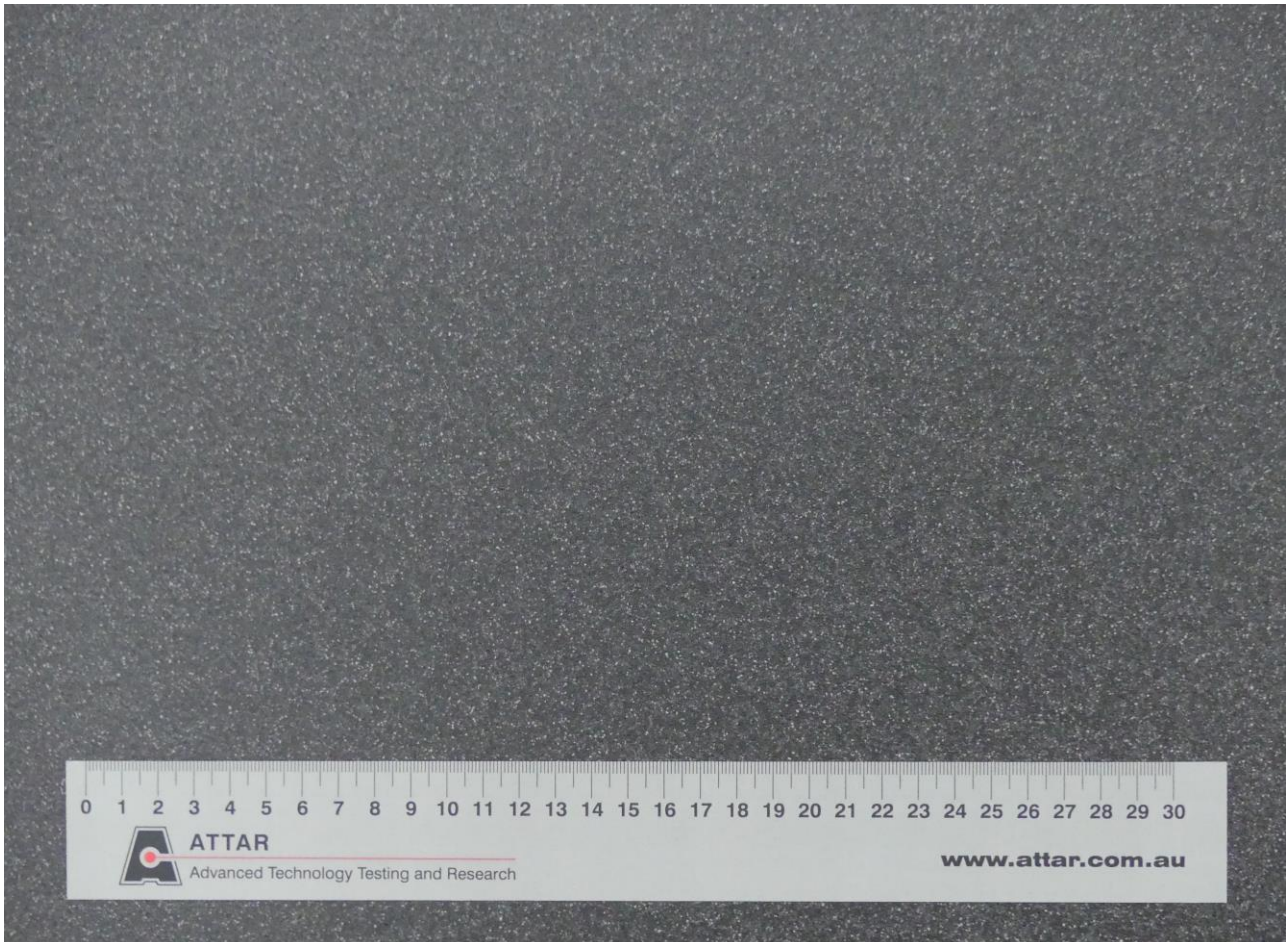
Reviewed By:



Marcus Braché  
 Senior Engineering Technician  
 Approved Signatory



Awel Guled  
 Compliance and Test Technician  
 Approved Signatory



**Figure 1:** Polysafe Verona PUR Pure Colours, Thickness: 2.0mm, Weight: 2.6kg/m<sup>2</sup>, Shade: 5236 Rich Black, Batch No: 1H364



**CLASSIFICATION CRITERIA – AS 4586 - 2013**  
**Oil Wet Inclining Platform Test – Appendix D**

**Compliance**

**TABLE 5: CLASSIFICATION OF PEDESTRIAN SURFACE MATERIALS ACCORDING TO THE OIL-WET INCLINING PLATFORM TEST**

<b>Classification</b>	<b>Angle, degrees</b>
No Classification	<6
R9	$\geq 6 < 10$
R10	$\geq 10 < 19$
R11	$\geq 19 < 27$
R12	$\geq 27 < 35$
R13	$\geq 35$